

Site Area
 0.71 Hect
 1.75 Acres

NOT TO SCALE
 This drawing is for information only and does not constitute a contract. It is subject to the terms and conditions of the contract. The client is responsible for providing accurate information. The contractor is not responsible for any errors or omissions. The contractor is not responsible for any delays or cost overruns. The contractor is not responsible for any damage to property or persons. The contractor is not responsible for any environmental impact. The contractor is not responsible for any legal liability. The contractor is not responsible for any other matters.

BSA
 Blair Avenue
 Ingleby Barwick
 Location Plan

Scale	1:1000
Date	14/06/2021
Drawn by	[Name]
Checked by	[Name]
Project No.	14006/101



Site Plan

BSBA architects

2nd floor, 11 High Row, Darlington, DL13 7QQ
Tel: 01325 354264

17.07.15

14006 P100D Site Plan - Apartments, Blair Avenue, Ingleby Barwick 1:200@A1

Rev D 09-Dec-15

This drawing is Copyright and must not be reproduced without consent of BSBA Tees



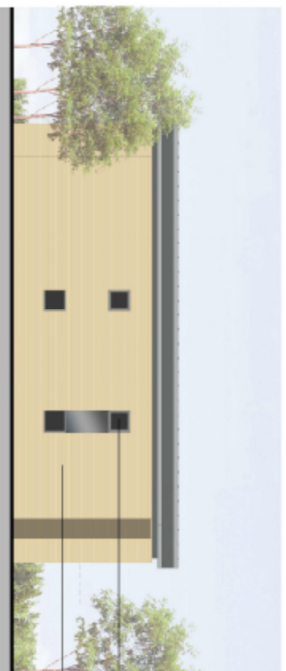
WEST ELEVATION 1:100 @ A1



EAST ELEVATION 1:100 @ A1



SOUTH ELEVATION 1:100 @ A1



NORTH ELEVATION 1:100 @ A1



Ground



First



— Metal cladding matching roof
— Standing seam roof - Dark grey

WEST ELEVATION 1:100 @ A1

Glazed balustrade to balconies with timber handrail & stair finish. Timber slat sliding shading panel on metal runners, stain finish.

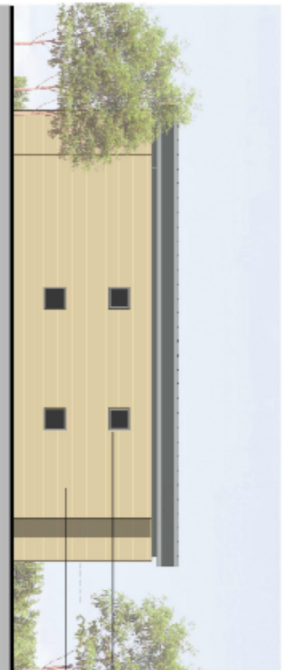


SITE BOUNDARY

EAST ELEVATION 1:100 @ A1



SOUTH ELEVATION 1:100 @ A1



NORTH ELEVATION 1:100 @ A1

— Dark grey PPC aluminium windows
— Warm buff brick

BS architects

BS&A Architects: 2nd floor, 11 High Row,
Derlington, OX3 7JQ. Tel: 01235 354204

1:000/15

14005 P102, A East Building Elevations, Blair Avenue, Ingleyby Barwick 1:100 @ A1
Rev A 10.12.15

This drawing is Copyright and intended to be reproduced with all copies of BS&A files





Ground

First

BS architects

2nd floor, 11 High Row, Darlington, DL3 7QQ
Tel: 01325 354254

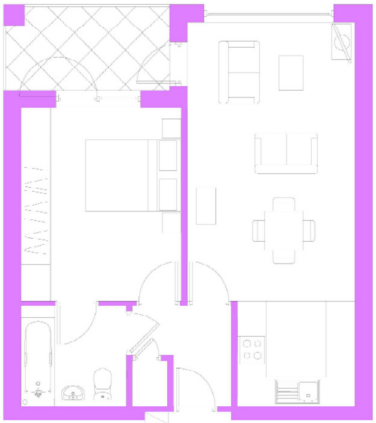
17.07.15

14006 P110B General Arrangement Plans East Building - Apartments, Blair Avenue, Ingleby Barwick 1:125@A1

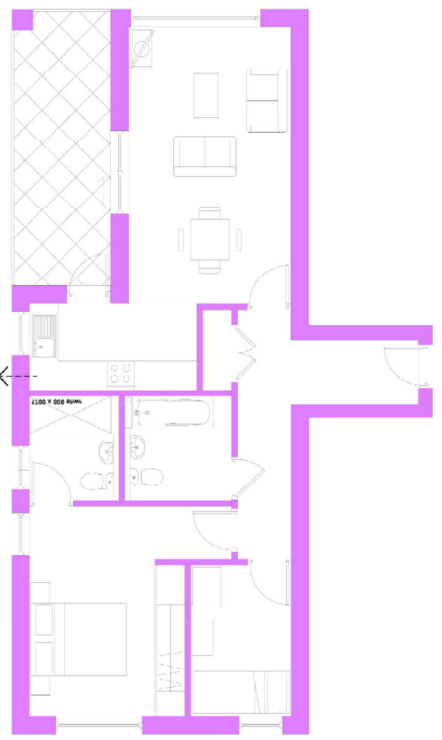
Rev B - Apartment sizes increased. 09-Dec-15.

This drawing is Copyright and must not be reproduced without consent of BSBA Tees

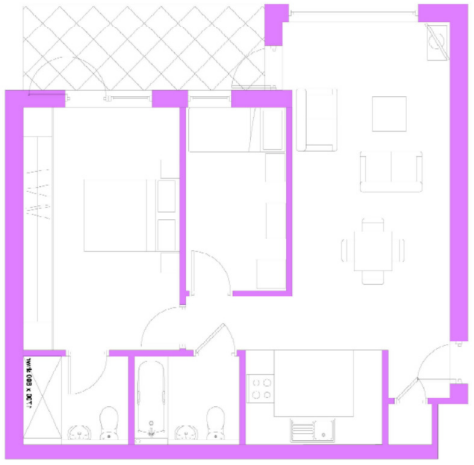




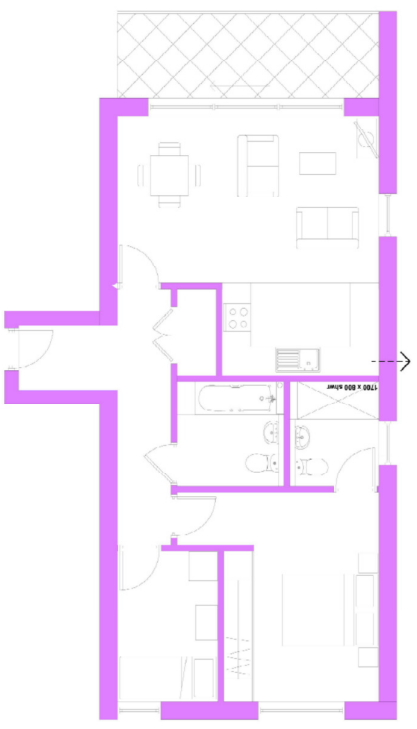
1-BED APARTMENT
TYPE A
50.0m2 gfa



2-BED APARTMENT
TYPE B
70.5m2 gfa



2-BED APARTMENT
TYPE D
69.0m2 gfa



2-BED APARTMENT
TYPE E
70.1m2 gfa



2-BED APARTMENT
TYPE C
66.7m2 gfa